

Gifts for Him and Her

By Patti Jones

(From Montgomery Wards Catalog, winter 1931)

Gifts for Him

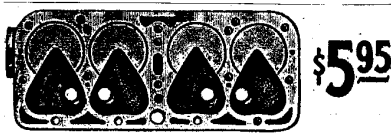
What would, us ladies buy as a gift for the "man in our life"? Car parts!! Yes, many of the guys, today, would love to have some of these accessories that were advertised in the Montgomery Wards catalog.

(A) This is a high compression cylinder head; also known by the guys as a "police head, that law enforcement agencies put on the Model A's for speed. It would give a Model A 5.9 to 1 compression ratio to a stock Model A head. (They understand all that stuff)

(B) These are two examples of accessory heat and oil pressure gauges mounted under the dash of your Model A.

(C) This is an accessory starter pedal, so your "man" doesn't have to stretch his leg to reach the starter button.

(D) Many guys would love to have this emergency brake extension lever so they don't have to reach a long way when releasing and setting the parking brake. Many of these 1931 gifts were priced from \$.89-\$5.95...right now a "police head" advertised in The Restorer was \$225.00!



\$5.95

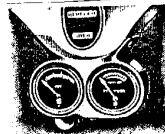
More Speed—Power—Pick-Up For Fords, Models A-AA

A high compression Cylinder Head similar in construction to those supplied by the Ford Motor Co., for Police and Highway Patrol Cars.

You will be able to out-perform other cars like yours on the highway. You will thrill at the extra surge of power and speed. Installation is easy with Cylinder Head Gasket and instructions furnished. Not Prepaid. Ship. wt. 40 lbs.

461 C 2500 \$5.95

(A)



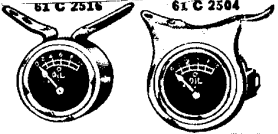
Heat Indicator and Oil Pressure Gauge For A-AA Fords

Two needed instruments in one unit. Motor temperature registers on one dial; oil pressure shows on other—one glance only is needed. Easily installed—held by screws in panel. Postpaid.

Fits cars with plain or ribbed panels. 61 C 3602. \$4.25

89¢

For Models A-AA Fords



Dash Mounting Oil Gauges

Tell whether your motor is being lubricated! All have harmonious nickel finish cases; are easily installed with instructions; held by screws already in panel. Ship. wt., each, 1 lb. 4 oz.

61 C 2504—De Luxe Model as used on finest cars. For Models A-AA Fords with plain or ribbed panels. 98¢

61 C 2516—Standard Model Gauge. For Models A-AA Fords with plain or ribbed panels. 89¢

(B)



Starter Pedal For Fords A-AA

42¢

Puts Starter pedal within easy reach and increases leverage so that little effort is required to start. Pressed steel, nickel-plated. Ship. wt. 8 oz. 61 C 2510 42¢

(C)



For Fords A and AA

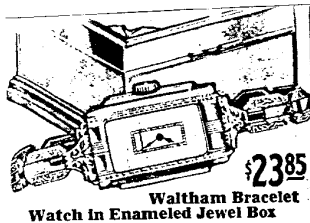
Brake Lever Extension 98¢

Brings emergency brake within easy reach. A slight pressure releases it. Quickly installed—no drilling. Black enamel and nickel. 61 C 2536—Ship. wt. 1 lb. 98¢

(D)

Gifts for Her

It is very easy for our gentlemen to please us Model A ladies. We'd love a new Waltham bracelet watch in white gold (A), or (B) A new compact with lipstick in like these 2 styles. Diamonds are a "girl's best friend", and we'd surely love either of these two ring selections set in platinum (C), and lastly (D) any of the enameled mesh bags could certainly win our love.



\$23.85

Waltham Bracelet Watch in Enameled Jewel Box

(A)

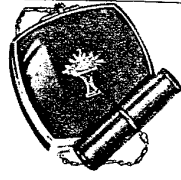


Face Powders Pages 195 to 197

Compact With Lipstick

Striking enamel design on top. Non-tarnishing finish on back and chain. 2 1/2-in. in diameter, chain 3/4-in. long. 545 C 6867—Black and red. 545 C 6863—Black and green. Each, Postpaid..... \$2.19

(B)



Compact With Lipstick

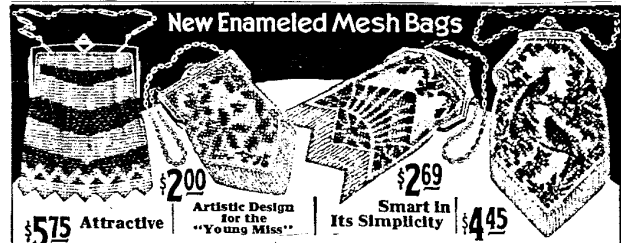
Decorated with basket in green enamel inlay; genuine Macassar. 2 1/2 in. square. 545 C 6897—French Blue. 545 C 6898—Red. 545 C 6899—Black and green. Each, Postpaid..... \$3.98



3650 Exclusive Design \$36.50

7950 Modernistic Effect \$79.50

(C)



New Enameled Mesh Bags

\$5.75 Attractive

200 Artistic Design for the "Young Miss"

269 Smart in Its Simplicity

445 Very Charming

(D)