

UPDATED FASHION INFORMATION

By Donna May Bewley, Era Fashion Committee Chairperson

This communication is the first in an on-going series of fashion updates designed to keep era fashion enthusiasts informed of recently discovered fashion information that is not included in the MAFCA *Fashion Guidelines*.

Anyone interested in submitting new fashion related items not found in the Fashion Guidelines or “A Book of Fashion Facts 1928-1931” may send documented pictures and sources to the **Era Fashion Committee Chairperson** at MAFCA headquarters. The Era Fashion Committee will review the information for accuracy. If the new information is approved, it will be placed on the MAFCA web site for informational purposes only. If an entrant plans to enter with the items that have been submitted and approved on the web site, the entrant must bring documentation that verifies the authenticity of the item worn or carried. The documentation could be a copy of the information posted to the website, or an era publication from 1928-1931.

The Fashion Guidelines, page 3-D-1 and 2 states “Horizontal straps were on later purses.” We now know this is not accurate information. The March/April 2007 issue of *The Restorer* published an article written by **Lynette Marcione**. Included in this article is updated fashion information regarding horizontal back straps on purses. Below are illustrations of horizontal back straps on women’s purses from a 1928 Chicago Mail Order catalog, *Elite Styles* magazine dated March 1928, and a picture of a vintage purse with horizontal back strap from Era Fashion Committee member **Pegge Blinco’s** private collection.

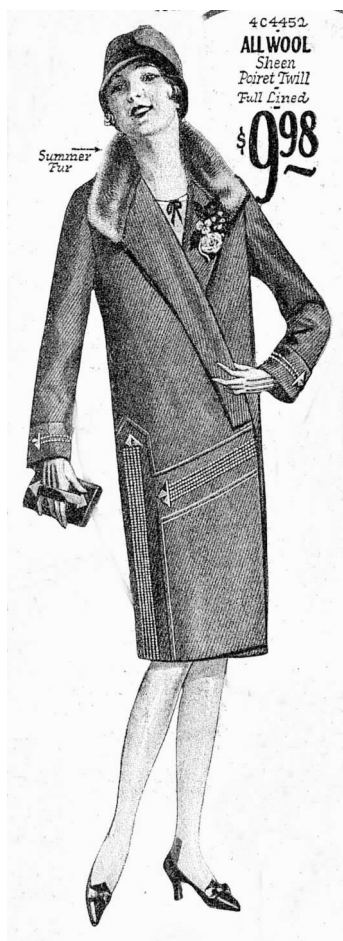




Fig. 7768D
 In this tailored suit, a wrap-around skirt of one of the new soft tweeds of diamond motif combines smartly with a single breasted plain tweed coat of matching hue. A mannish vest of white pique is smartly worn for added chic. Designed for

Fig. 8529D
 The braid bound edges of this very chic model of twill or rep add one more telling note in its smart effect. Important are the flaring cuff-like lower sleeves and the trimmed plaits and lines of the jacket and skirt. In-



Horizontal back strap on leather purse
 Private collection
 Pegge Blinco

This is an example of the type of information that is needed when “updated fashion information” is submitted to the Era Fashion Committee for review and approval prior to being accepted for the MAFCA web site and future updates to the *Fashion Guidelines*.

#####