

Collars, Cuffs, Sleeves and Belts

By Lois Przywitowski

The season is changing, and once again last year's wardrobe is in good condition but could be improved by an update. So, as a fashionable, but budget minded woman of the Model A era, what can you do? As always, the fashion industry has a solution for you, it's not a new idea, but it still works wonders with your wardrobe. You can purchase, or make, new collars, cuffs, sleeves, or belts for that perfect update.



The collar and cuff set on the left side of this picture is said to be "the most desirable style of the season." It is made of white linen, trimmed with lace and sells for 49 cents.

The second collar and cuff set is made of semi stiff white cotton with lace edging. This lovely collar sells for 39 cents.

The Charles William Stores, Inc., Fall and Winter, 1928-29



No. 7—Belt, Collar and Cuff Set

Green felt is piped with tan in this four-piece set, the narrow strip of tan simply being placed beneath the edges of the green and stitched flat, since no edges need be turned.

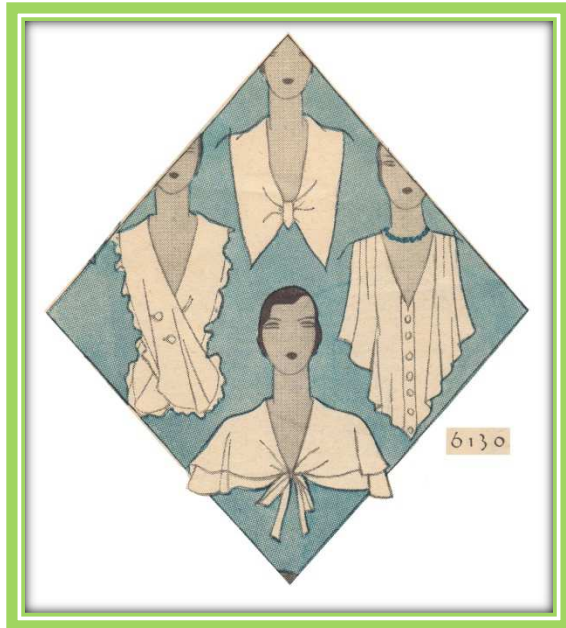
Felt flowers trimming set are four layers deep, tacked flat with a small wooden bead forming the center of each. The bottom layer is yellow, the next orange, the next tan, the top yellow.

Such a set gives a distinctive touch to tailored frocks.

This belt, collar, and cuff set, shown in the April 1929 issue of *Woman's World* is featured as one of "the newest ideas for accessories which are easily and quickly made." The entire set, with its subtle simplicity, is made from felt.

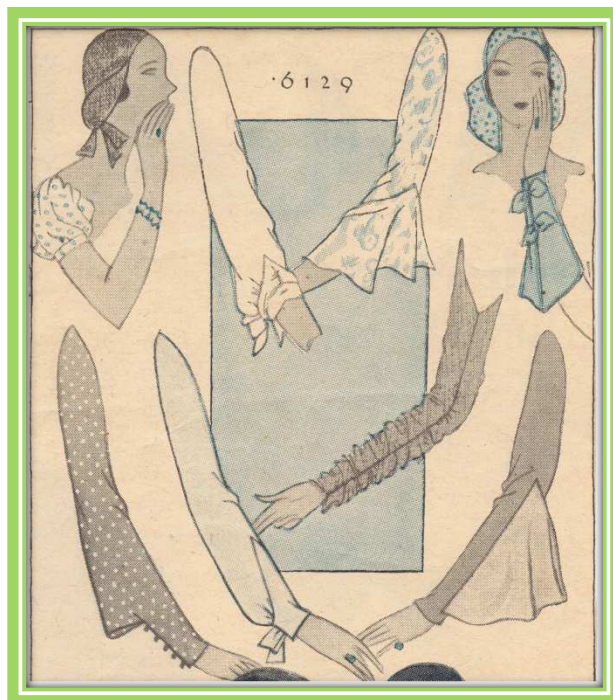
Woman's World, April 1929

In the June 1930 *McCall Style News*, it was noted that “the mode has definitely gone feminine, these softening and flattering accessories play a very important part in the chic ensemble.”



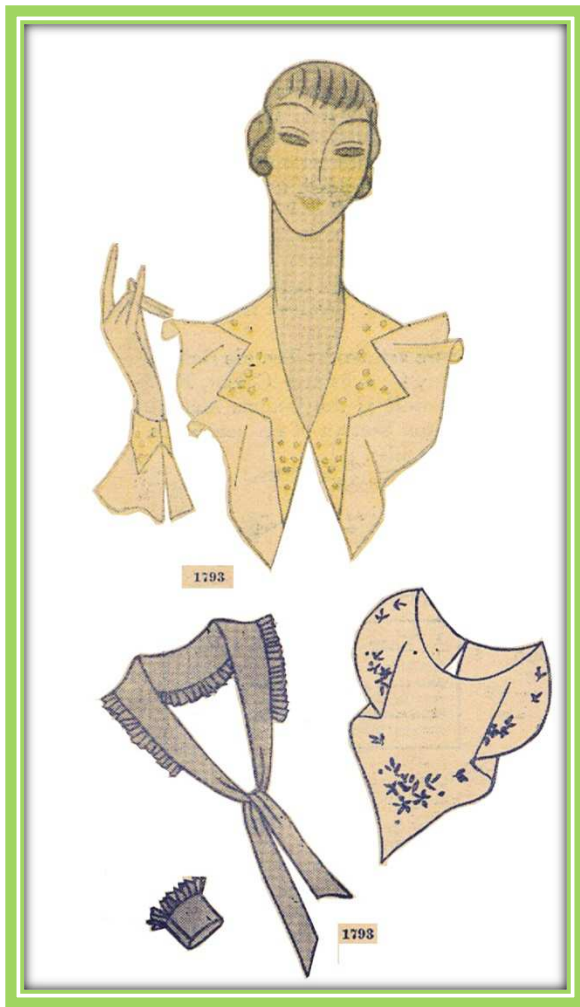
The collar pattern shown here was available in small, medium and large sizes. The recommended fabrics were chiffon, pique or lingerie lawn. They were sure to add femininity and grace to the right frock with their flowing lines.

McCall Style News, June 1930



This sleeve pattern came in 6 sizes. Note the short puff sleeve in the upper left corner. The pattern description notes that “with the advent of the short sleeve many a frock may be remodeled attractively and made to serve another season.”

McCall Style News, June 1930



This smart collar and cuff pattern came in one size. The recommended fabrics were organdie, flat crepe or satin; some with hand embroidery, others had picoted edges or were finely pleated.

The pattern included blue transfers and sold for 35 cents.

McCall Style News, June 1930

#####