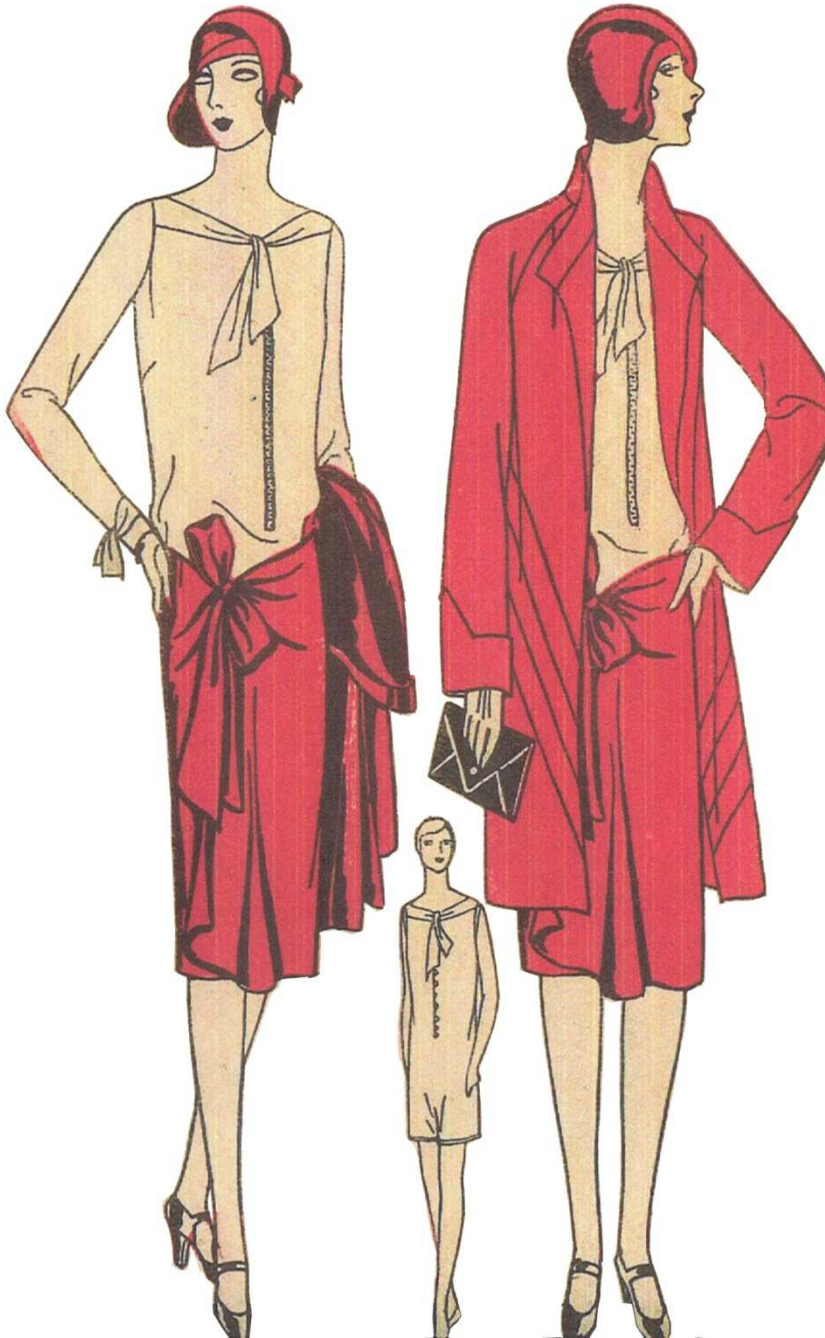


A CULOTTE-BLOUSE AND A CAPE-FROCK ENSEMBLE

By Lois Przywitowski



While researching magazines, catalogs and pattern fliers, I stumbled upon a picture of a Culotte-Blouse and a Cape-Frock pattern. When I think of culottes, I think of split skirts, clearly not the case here, and I still am not sure how the term culotte applies to this pattern.

This frock is a combined blouse and step-in with a one-piece tie-around skirt. The step-in bodice fastens by way of a slide, rather than the normal snaps of the era. Slide was the term for zipper in the Model A era. Slides were mainly used for galoshes and were not normally used in clothing until after the era.

Butterick recommended using satin crepe for the blouse and contrasting satin crepe for the skirt. The instructions for the slide fastener were included in the pattern.

For the cape, they suggested satin crepe, or plain or novelty weave wool coatings, or ribbed silks.

A Culotte-Blouse and a Cape-Frock,
Pattern Numbers 2526 & 2518
Butterick Fashions, April 1929