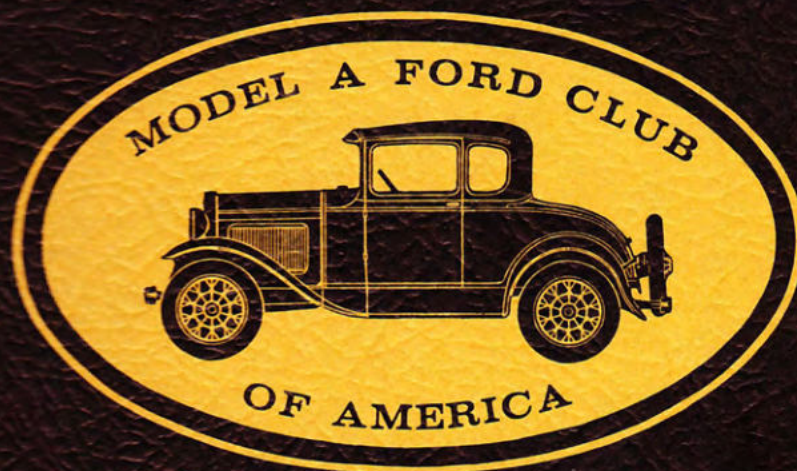


SOUVENIR  
COLORING BOOK



1962

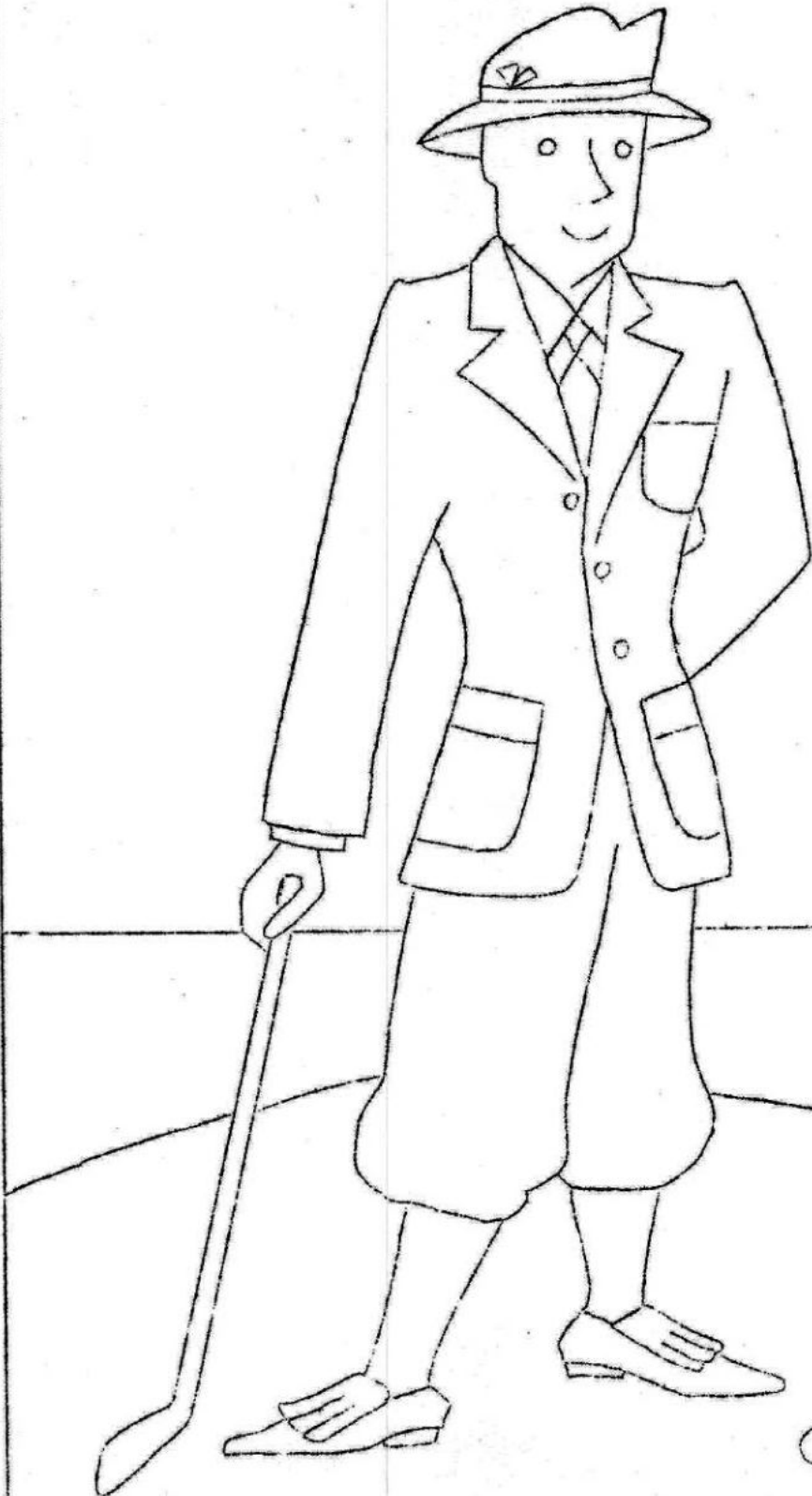
National Convention and Meet  
San Francisco, California

SOUVENIR  
COLORING BOOK

This booklet has been prepared exclusively for the Model A Ford Club of America to be sold at its 1962 Convention and Meet in San Francisco, June 29 - July 1. All proceeds will go to the general fund earmarked to cover meet expenses.

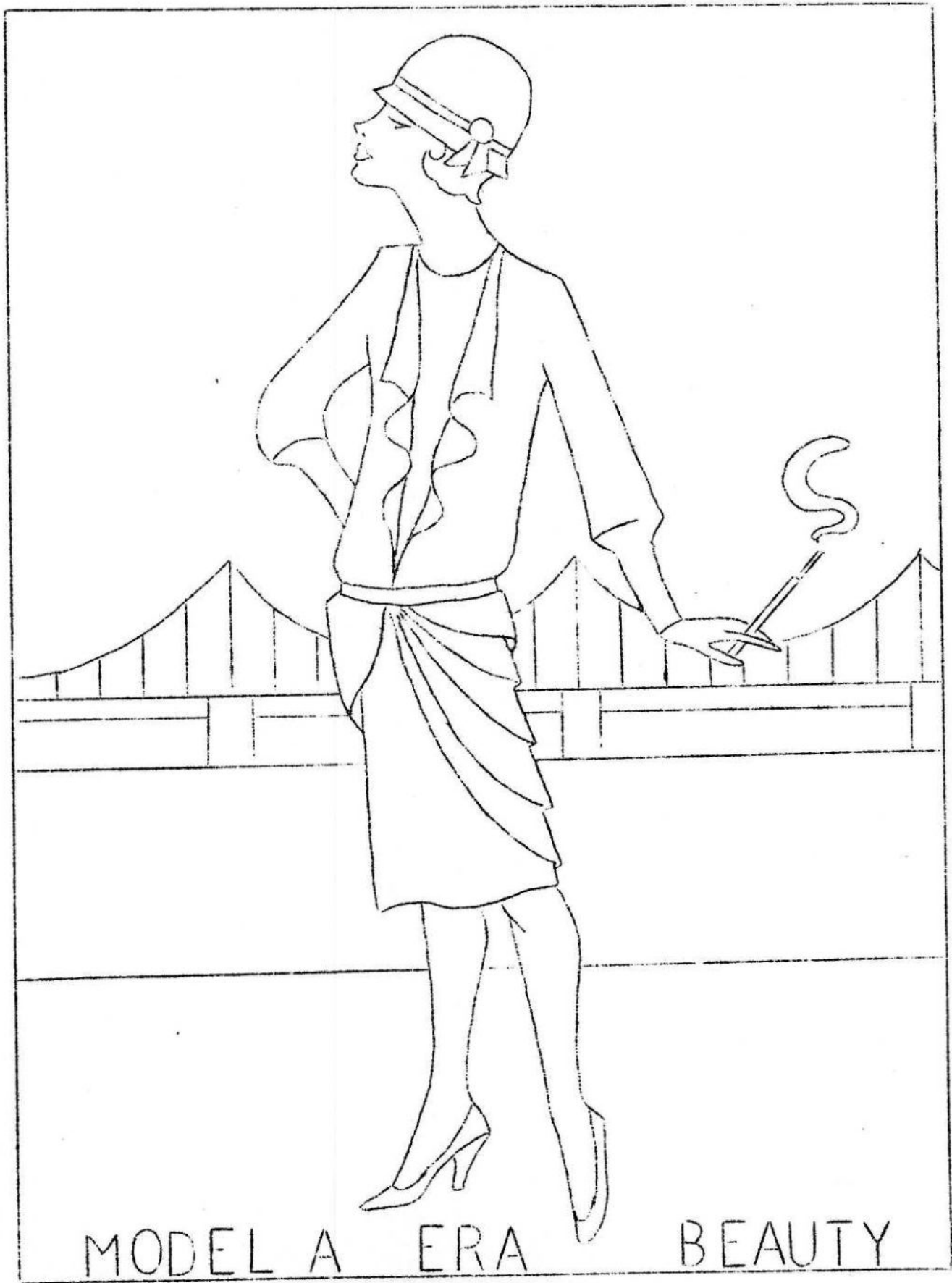
My thanks to all of those who offered ideas and helped with the assembly. Special appreciation is extended to Al Smith who arranged for the paper and spent many hours over a hot mimeograph machine to produce these pages.

Barbara Pricer  
Orinda, California  
May, 1962

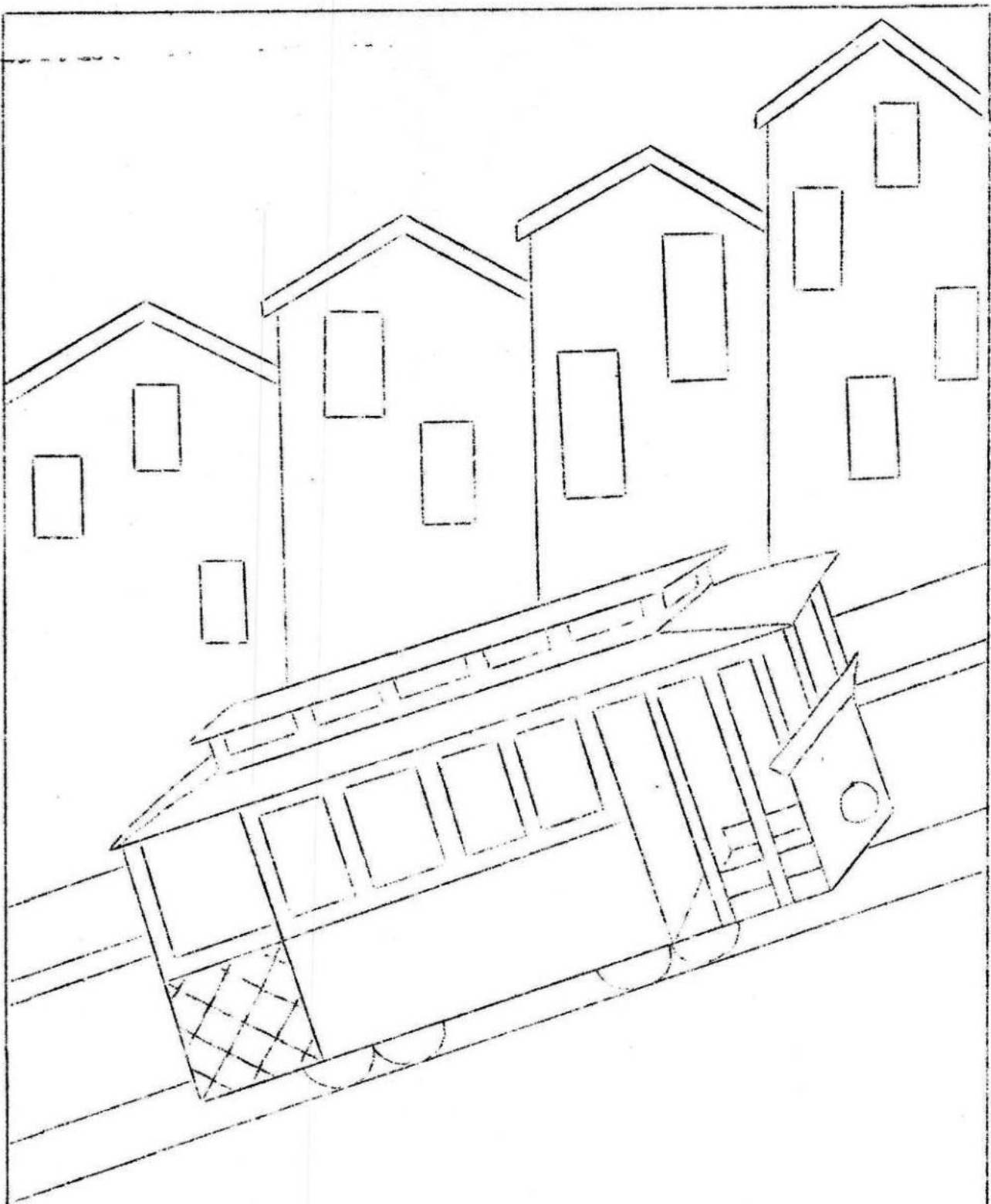


WELL DRESSED GOLFER



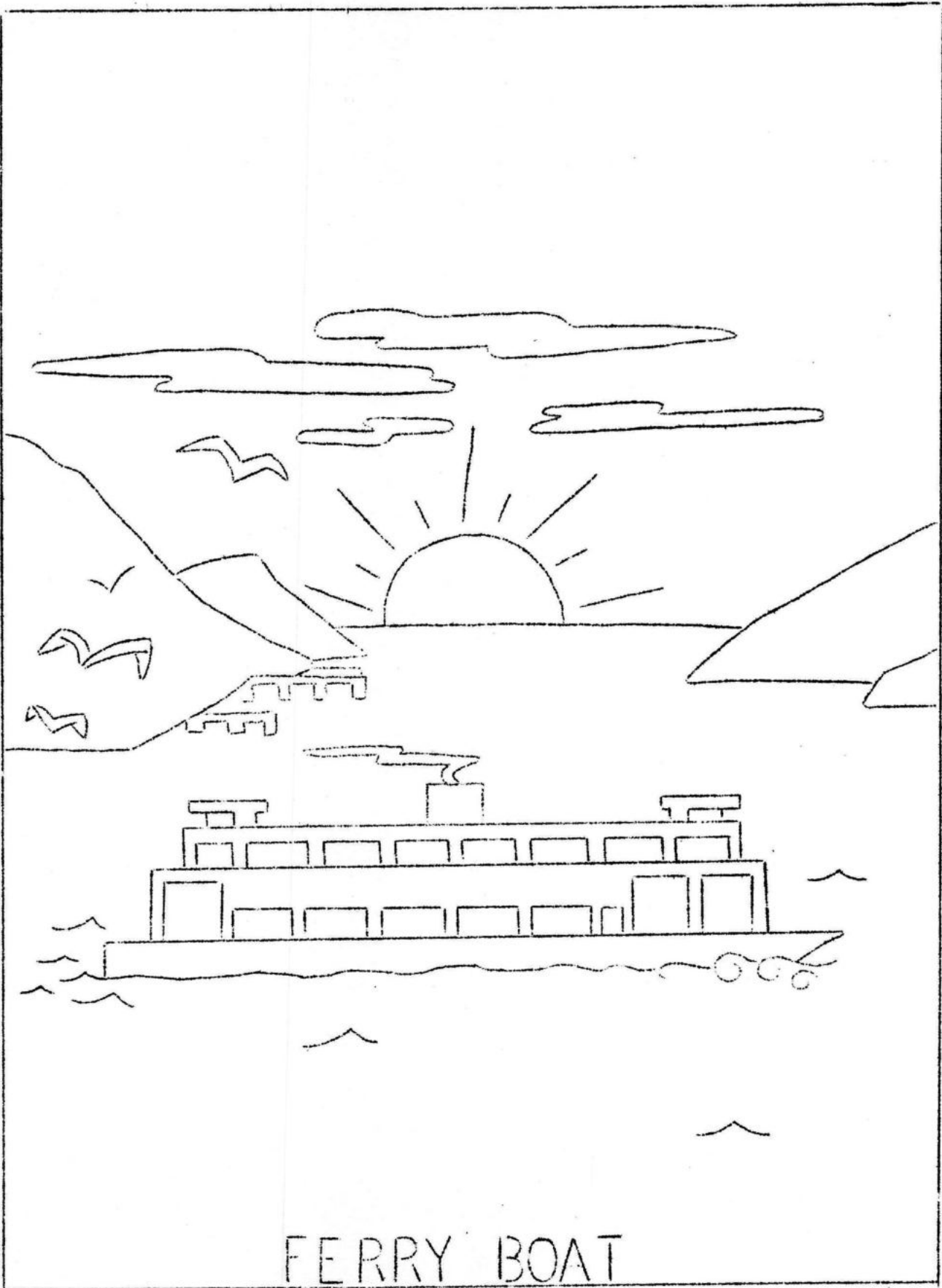


MODEL A ERA BEAUTY

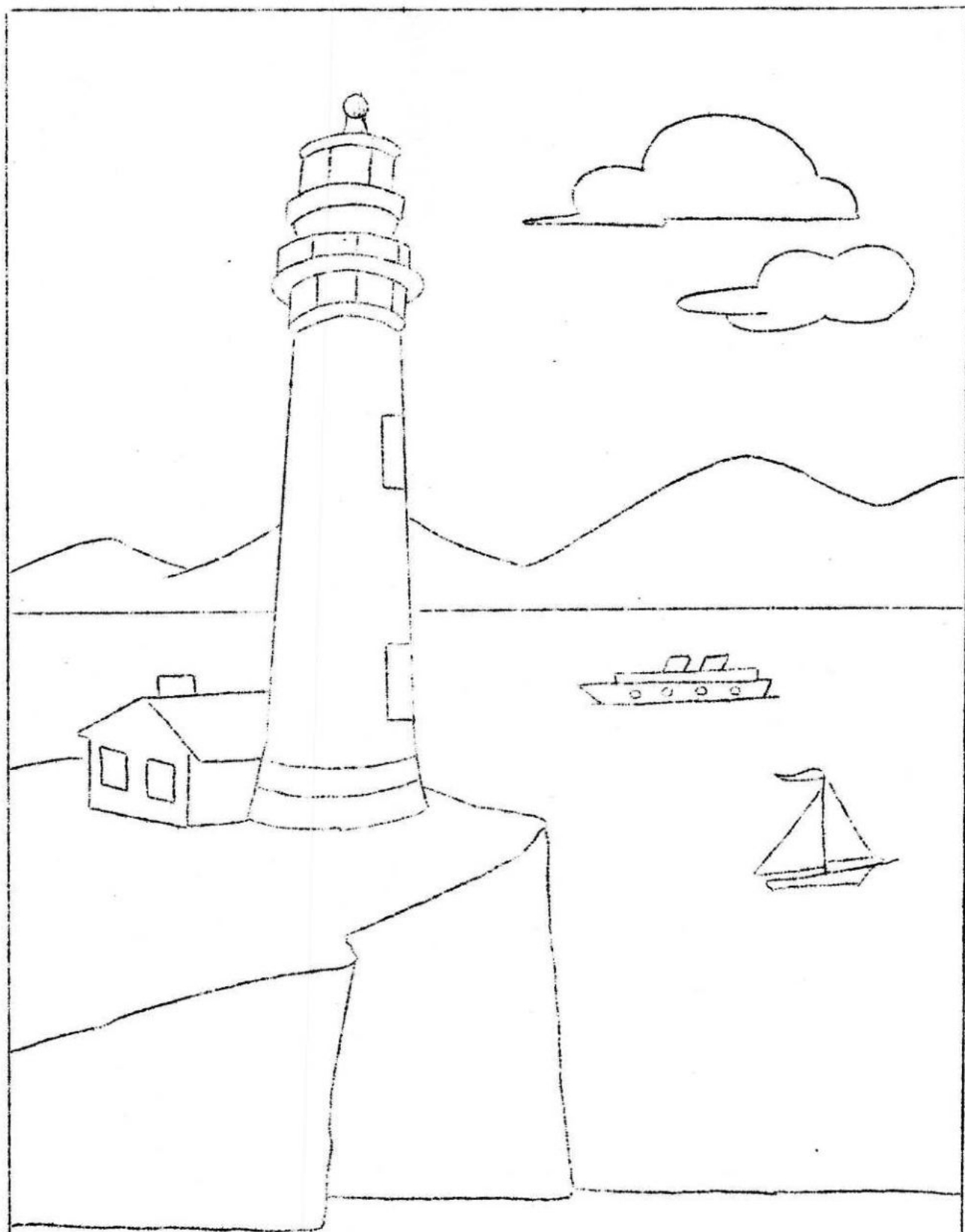


CABLE CAR



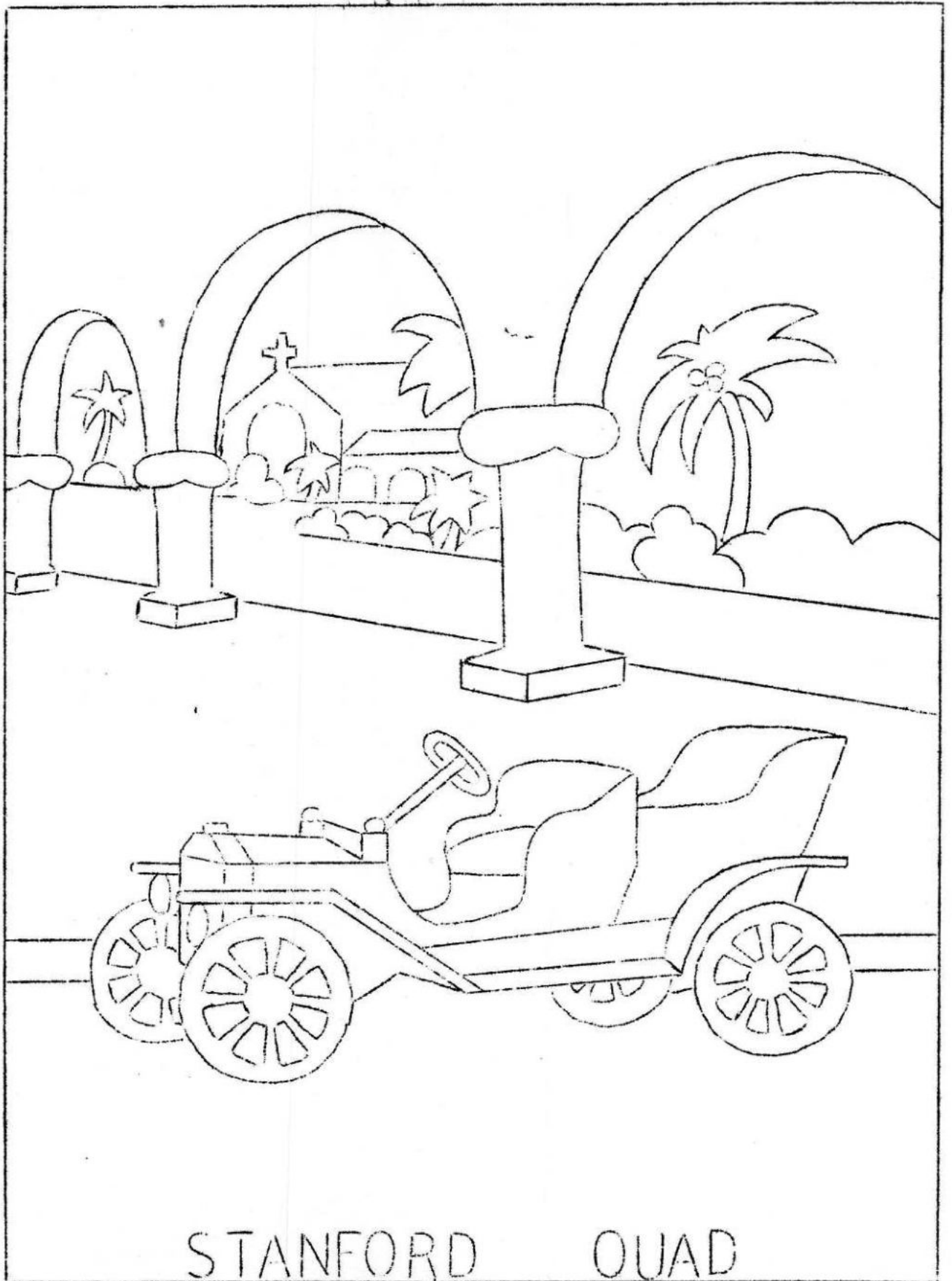


FERRY BOAT



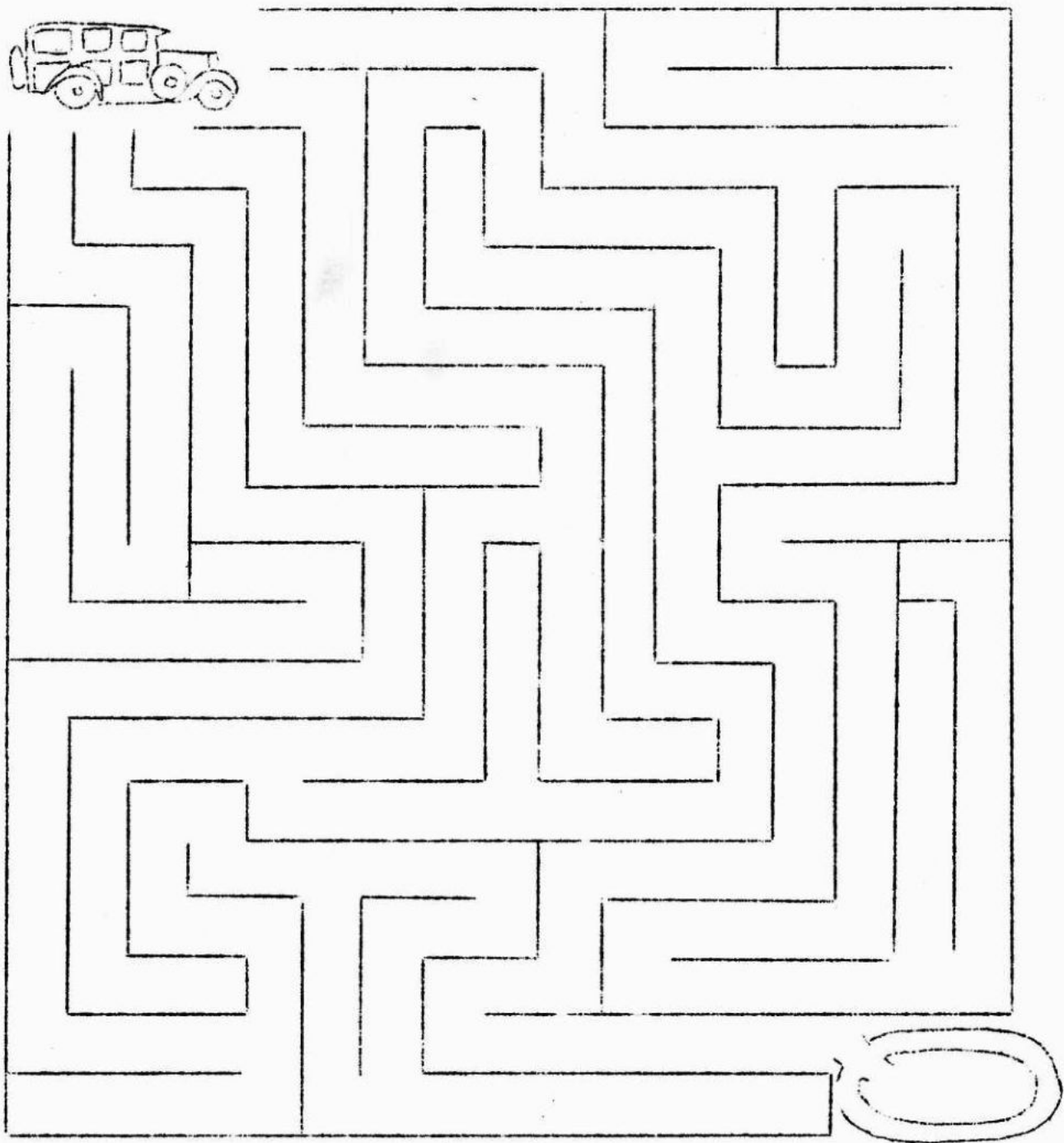
PIGEON POINT LIGHTHOUSE





STANFORD

QUAD

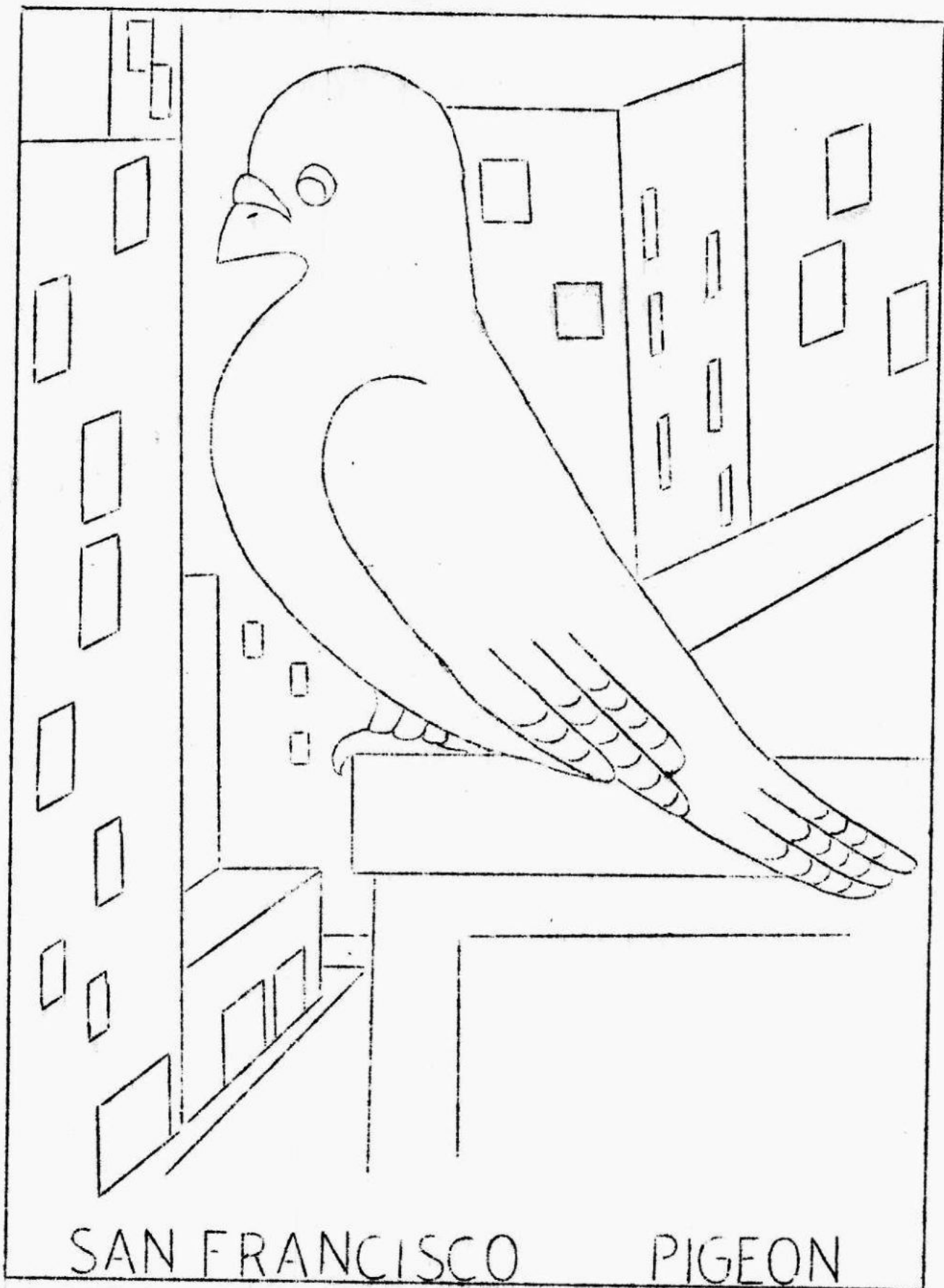


CAN YOU HELP THIS MODEL 'A'  
FIND THE WAY TO THE POLO  
GROUNDS ?



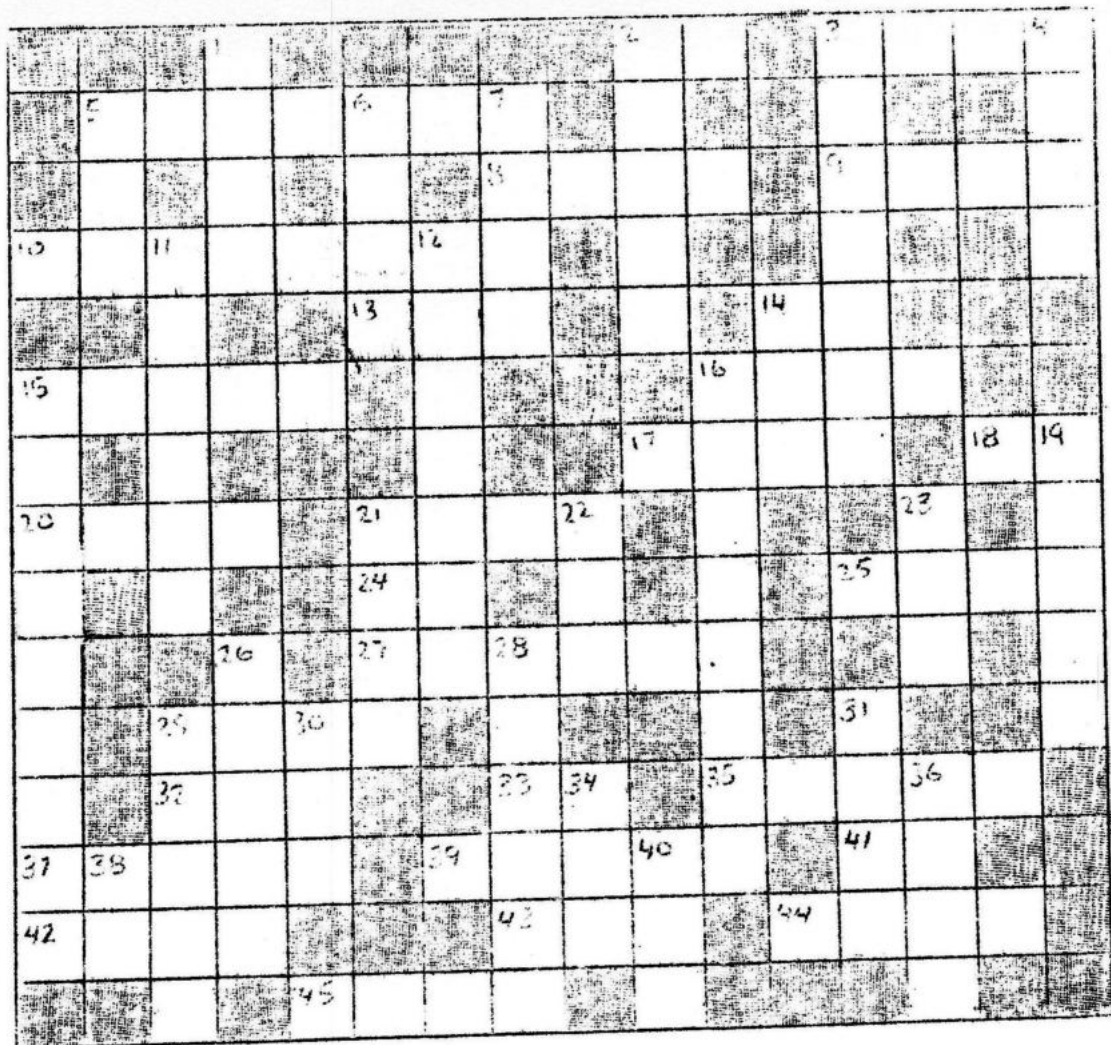
FISHERMEN'S

WHARF



SAN FRANCISCO

PIGEON



HERE IS A PUZZLE WITH \_\_\_\_\_

TWO SETS OF CLUES: \_\_\_\_\_

ADMIRER OR CRITIC \_\_\_\_\_

YOU GET TO CHOOSE \_\_\_\_\_



MODEL "A" ADMIRER'S PUZZLE CLUES

ACROSS

2. Would a Model "A" ever let you down?
3. Model "A" gas tanks are always ----
5. Defending your car to your wife is often ----
8. Model "A" lines are ----
9. Mates to bolts
10. A rough Model "A" may ----
13. A container or fitting to be greased
14. If your "A" isn't a "she" it must be a "he"
15. Handy to have just in case
16. Poor roads cause a ---- sometimes
17. Golf term
18. Albert or Alfred
20. What the wheels fit onto
21. Model "A" engines knock because of inferior gasoline
24. "My Model "A" and me"
25. One of several meshing parts in the transmission
26. Hard curbs force wheels out of line and cause ----
29. Name of tower in this coloring book
32. A good Model "A" will always ----
33. Pronoun
35. An unrestored Model "A" is sometimes called ----
37. Daddy will ---- the first one who climbs on the fenders
39. A Model "A" needs to be ---- at times to avoid motor wear
41. "Home" to MAFCA members is---- (abbrev.)
42. ---- paper is necessary to any restoration job
43. Restored Model "A"s are cheaper per ---- than Imperials
44. A little ---- now and then is bound to accumulate
45. The ---- advice from the family the better the Model "A"

DOWN

1. An original radiator may ---- a little
2. Some ---- in a motor is only natural
3. What makes the fan go around
4. Poor tour maps make it easy to get ----
5. The ---- is the homeland of the Model "A" (abbrev)
6. Long dramatic poem
7. The development of the Model "A" was a vital ---in history
11. Proof of a fine tune up is how slow the car ----
12. Compared to a good Model "A", other cars are ----
14. Compared to a good Model "A", other cars don't look so ----
15. Other cars seem ---- beside a Model "A"
16. Source of Model "A" parts
19. With one wheel off, even a Model "A" might ----
21. ---- will ruin a good car's chance for a trophy
22. All lights grow slightly ---- with age
23. There are ---- good town sedans left
26. The wheels should be perfectly ----
28. Those who scoff are----\*--/---\* (one word)
29. A ---- is occasionally useful in cold weather
30. Contained in fountain pens
31. The ---- was outmoded by the Model "A"
34. This is Annual Meet Number----
36. A ---- unbelieving wonder greets a well restored Model "A"
38. Dear old Lad
40. All good things must ----

## MODEL "A" CRITIC'S PUZZLE CLUES

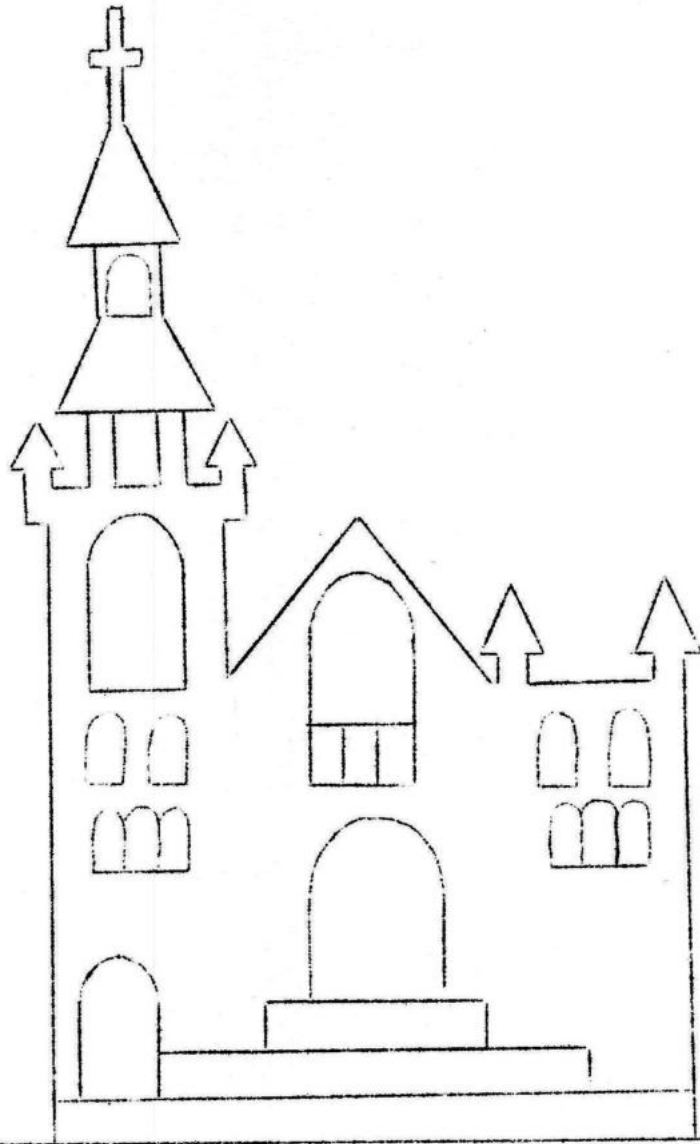
### ACROSS

2. Will we miss Dad's old clunk when it's gone?
3. With a Model "A" Dad's weekends are always ----
5. A Model "A" is cute but ----
8. That box of chrome plated junk is called ----
9. Model "A" fans are ----
10. Typical downhill sound
13. Handy to fill radiator with after water has boiled away
14. "----" is that man who lives in the garage
15. A necessity on any trip
16. Every pebble in the road produces a ----
17. Model "A" motor sound
18. Alphonse or Adelbert
20. What always breaks just before a trip
21. What the motor did the last time it was started up
24. We
25. The ---- shift lever is for bumping knees on
27. What Dad's car does at "high speed" on the freeway
29. Name of structure atop Telegraph Hill in San Francisco
32. With luck a Model "A" will usually ----
33. Bootshaped European country (abbrev)
35. Describes a typical Model "A" ride
37. Even breathe on Daddy's new paint job and he will ----
39. If you really hope to get there, it is wise to be ----
41. MAFCA headquarters
42. There seems to be no limit to the amount of --- paper needed
43. It takes at least a ---- of gear to maintain a Model "A"
44. Daddy and the garage are usually a ----
45. Horses are safer and cost ----

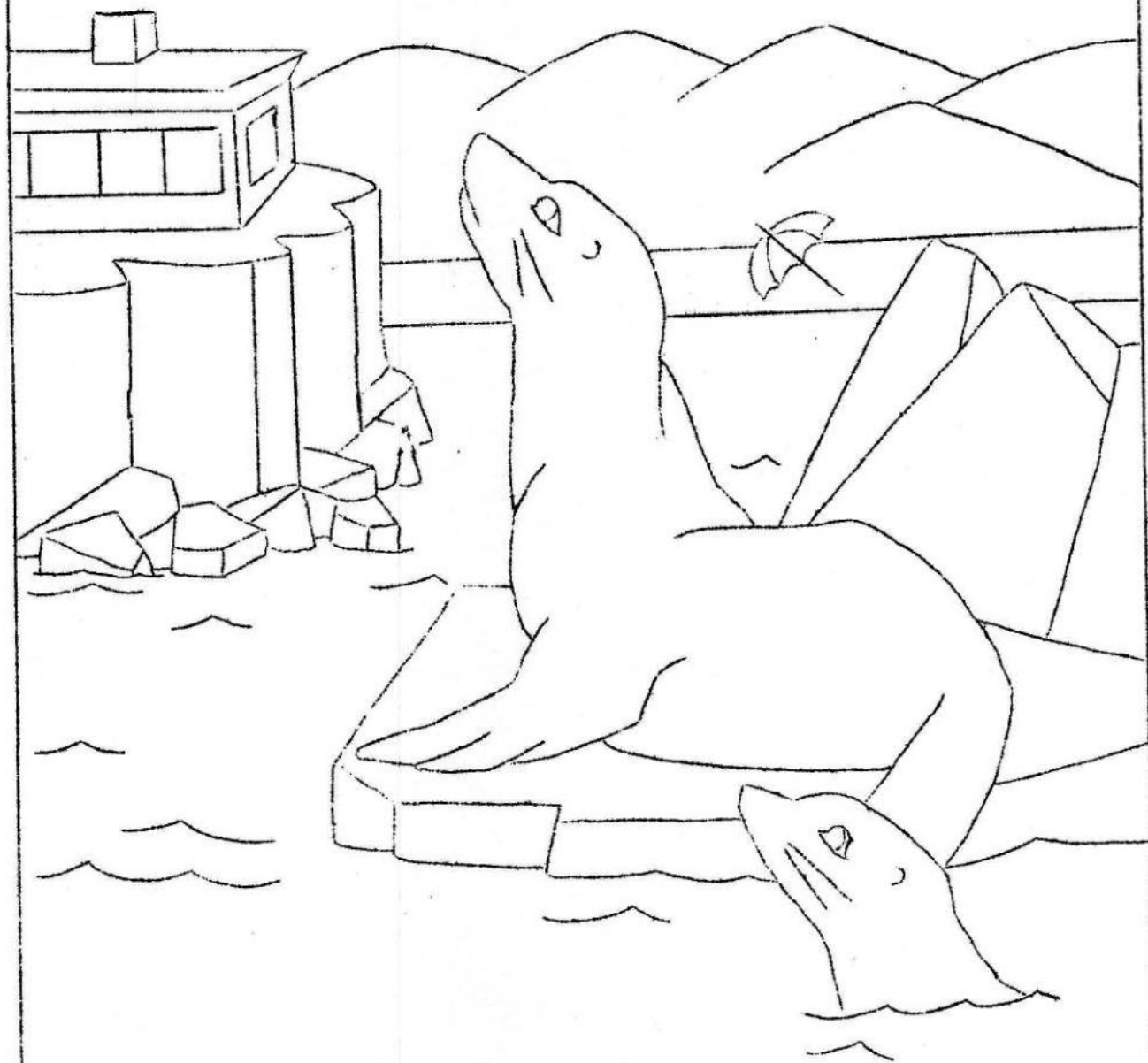
### DOWN

1. The radiator is sure to ----, especially in a barren desert
2. A Model "A" makes a lot of ----
3. An extra ---- is sure to be needed just when you don't have one
4. ---- is what you get on weekend tours
5. Model "A"s can be found behind barns in the --- (abbrev)
6. Long dramatic poem
7. It takes a high ---- to even get in a Model "A"
11. Going up hill at top speed the typical Model "A" ----
12. Most Model "A" goodies look like ----
14. A Model "A" is cold in winter and --- in summer
15. Model "A" era styles were ----
16. What a Model "A" restorer's yard looks like
19. Camels and Model "A"s have a peculiar gait called the ----
21. There is more ---- on the piano than on Dad's Model "A"
22. Model "A" lights are dangerously ----
23. The practical uses of a Model "A" are ----
26. More Model "A" wheels should be ----
28. People who travel in Model "A"s voluntarily must be ----
29. A vital necessity to the running of a Model "A"
30. Used to write letters with
31. A good reliable mode of transportation
34. It takes at least --- rough Model "A"s to make one that runs
36. The sound of a dying Model "A" motor
38. Ma's husband
40. Where will it ever ---- ?

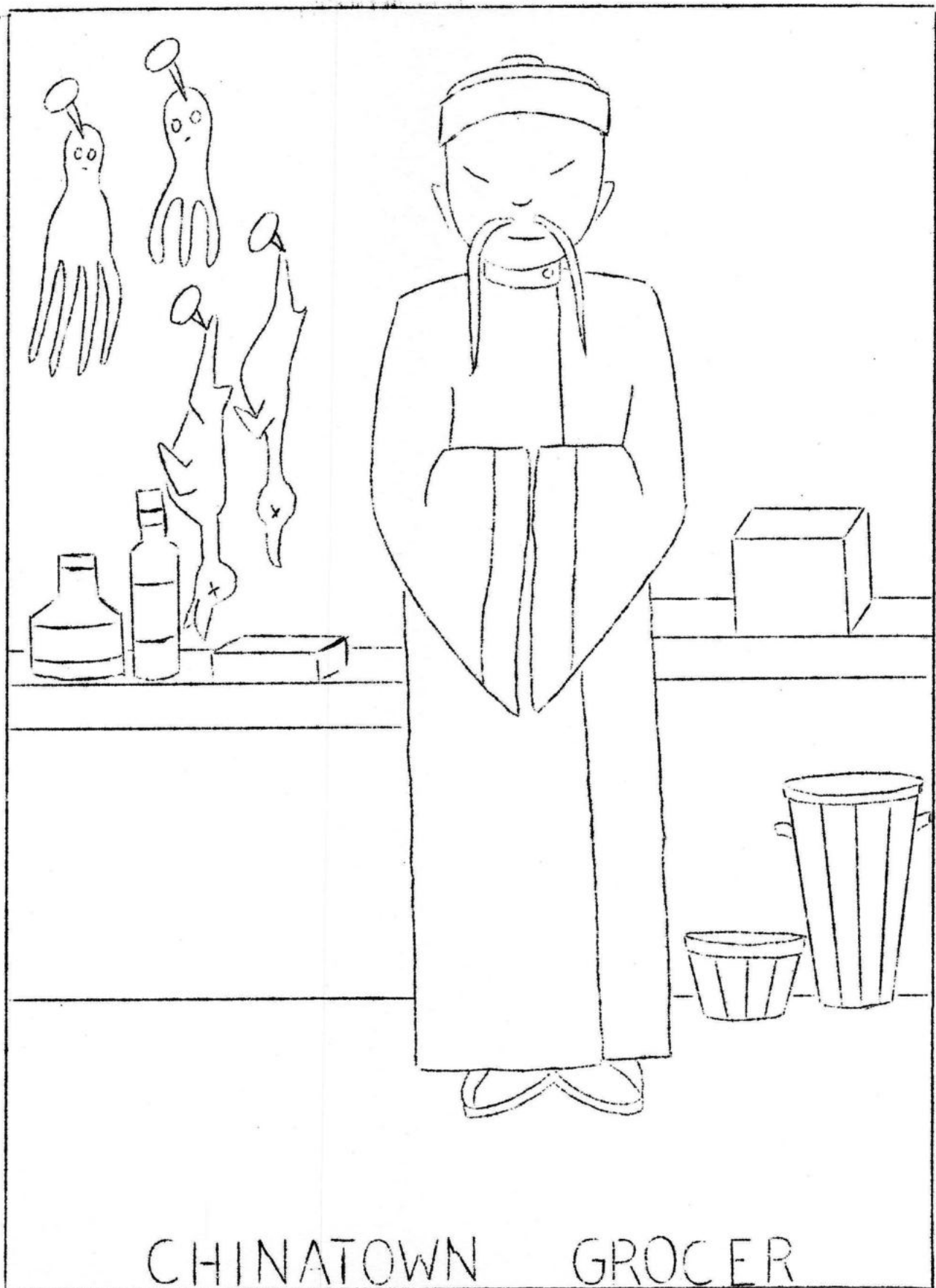
Answers on last page



ST MARY'S CATHEDRAL

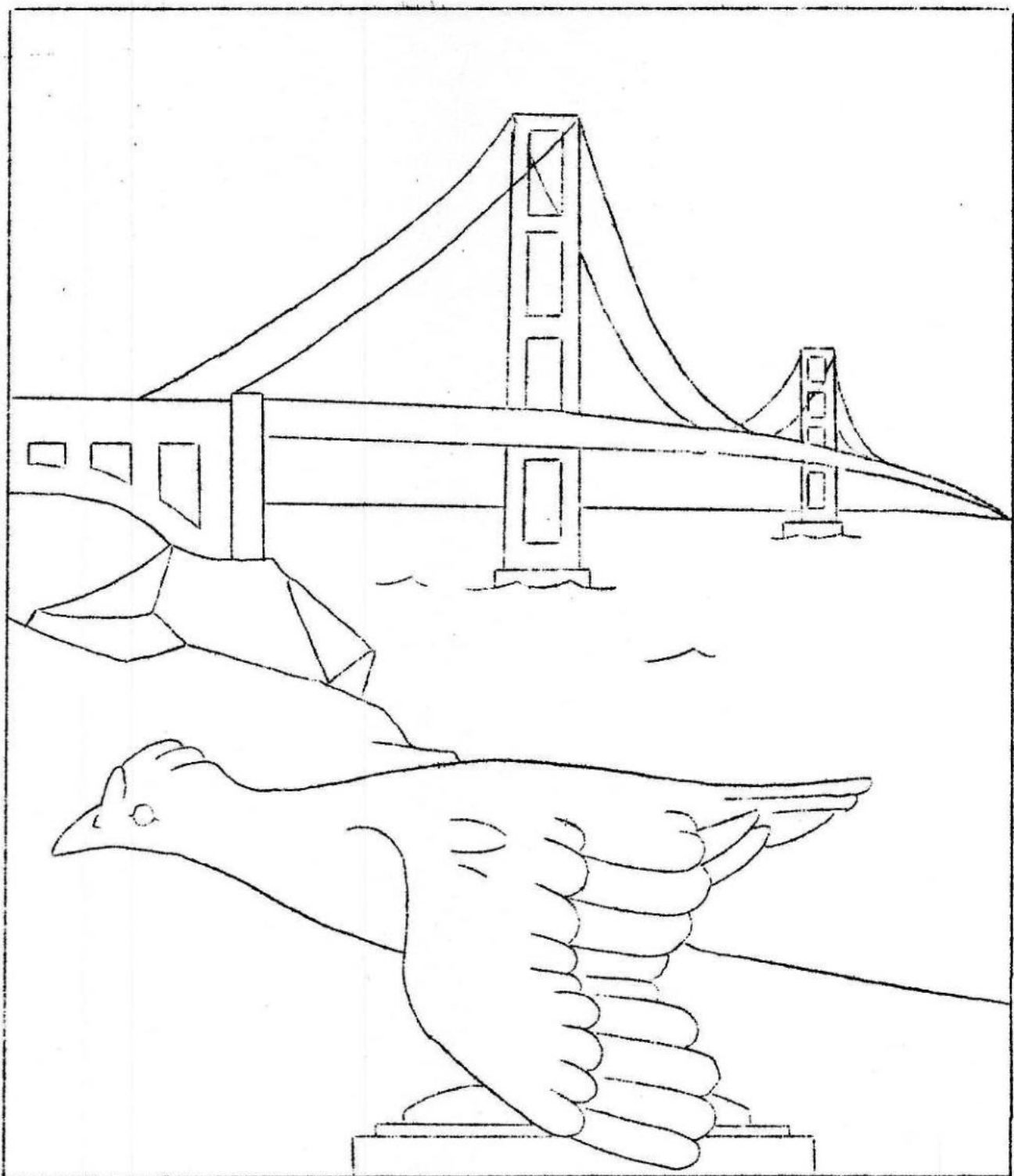


CLIFF HOUSE — SEAL ROCKS



CHINATOWN GROCER





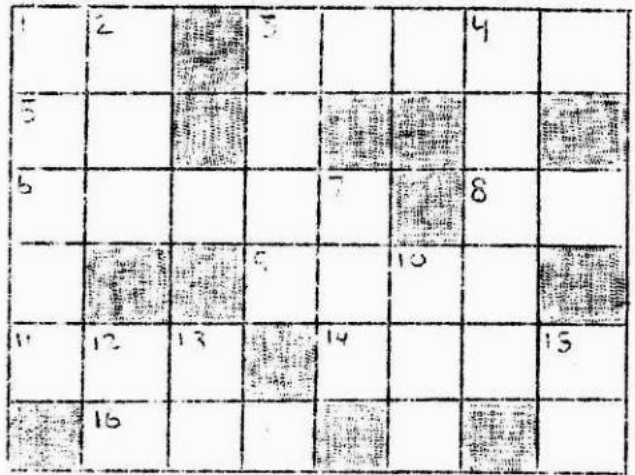
GOLDEN GATE BRIDGE

ACROSS

1. Notice of sale in newspaper
3. How Model "A" costumes look
5. It is -- hot that I am melting
6. Mr. Ford's first name
8. I -- going to town
9. Animal with antlers
11. What shines in the daytime
14. Back-talk
16. --- goes the weasel

DOWN

1. Left over after a fire
2. --- a deer, a female deer
3. A Model "A" is a kind of ----
4. Gets closer
7. Opposite of NO
10. When do we ---?
12. Not down
13. Opposite of YES
15. "The Bible tells me --"

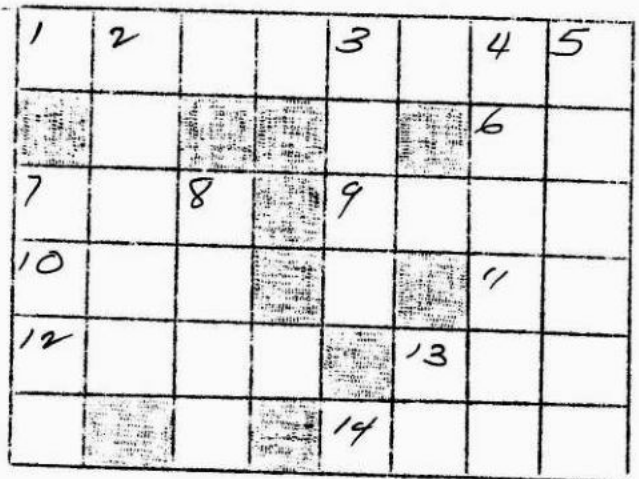


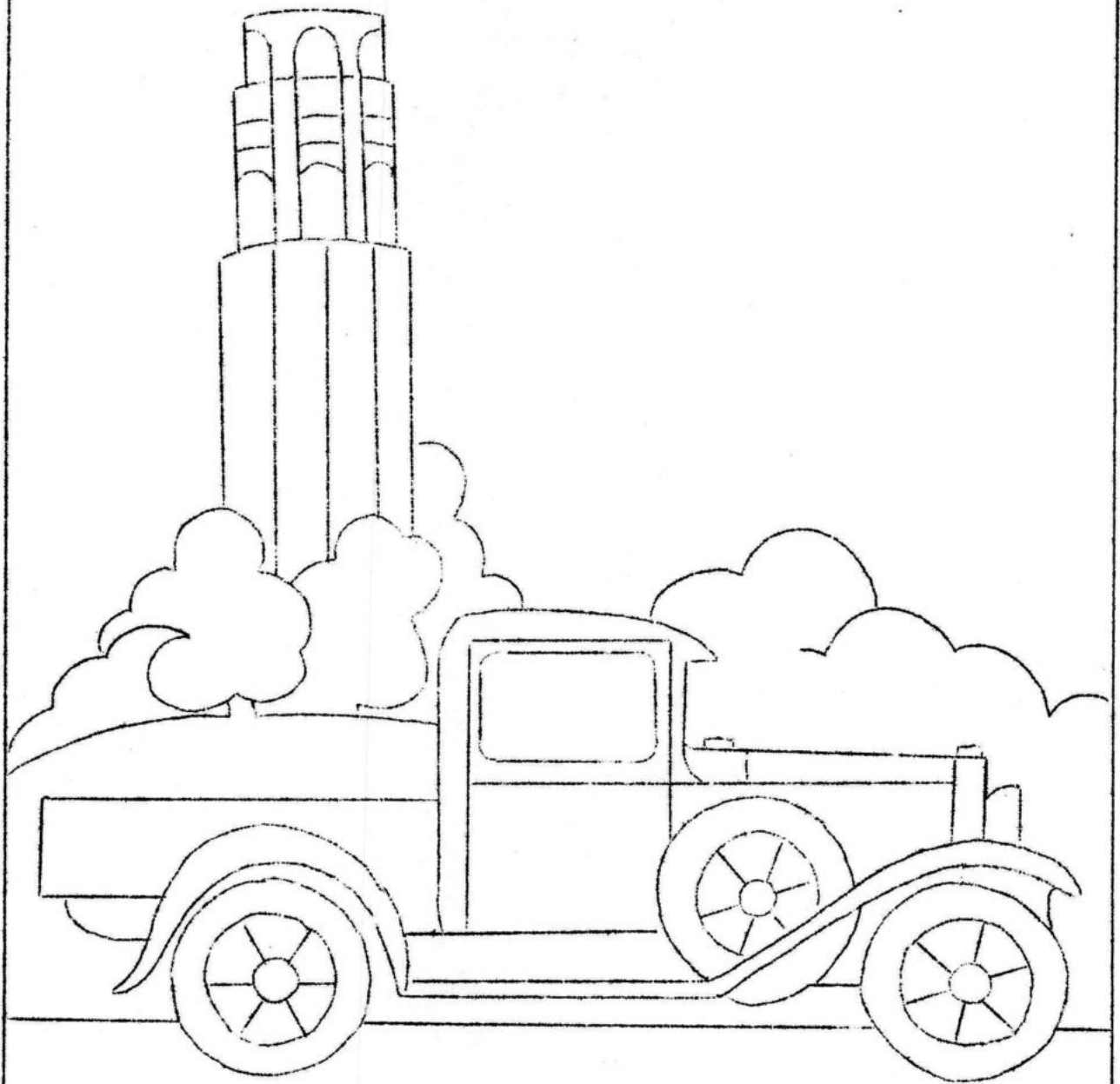
ACROSS

1. Kind of dessert (two words)
6. Opposite of YES
7. The Jack ---Hotel
9. He ---- he could come
10. A single thing
11. I
12. What covers the body
13. Girl
14. Coca ----

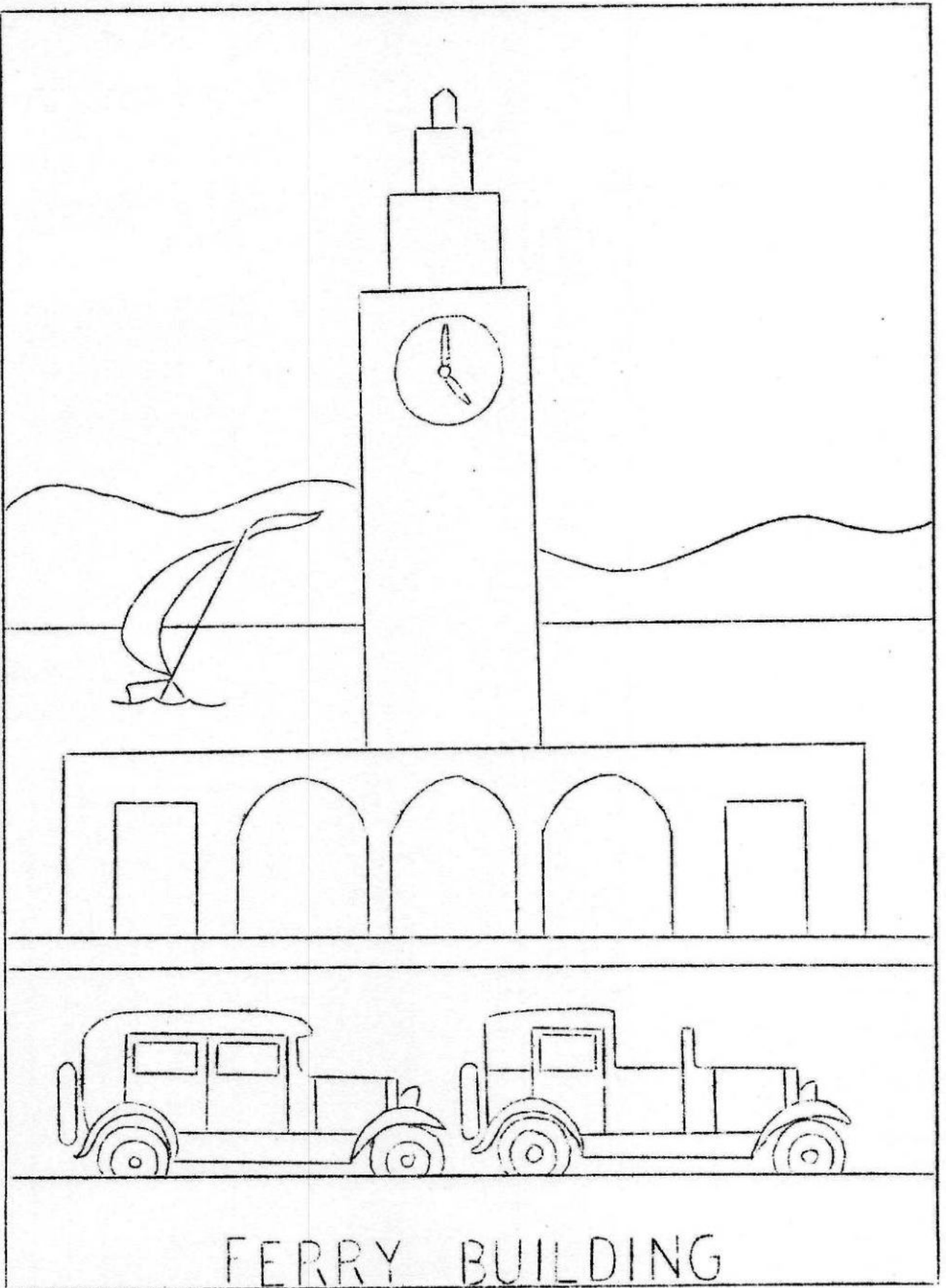
DOWN

2. Way to start a Model "A"
3. Take a nap
4. Furry creatures are called---
5. Kind of car (two words)
7. Toss
8. Used to steer a horse
13. Opposite of STOP





TELEGRAPH HILL — COIT TOWER



FERRY BUILDING